

Rolfe East



Madeley Road, W5

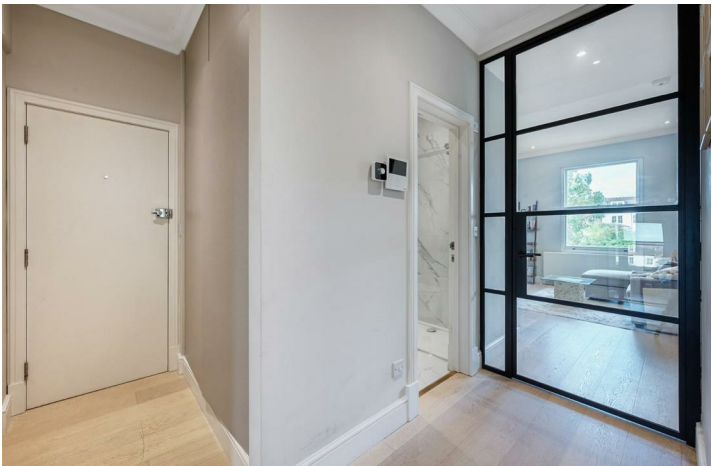
£425,000

- One double bedroom
- Excellent condition throughout
- 5 minutes walk to North Ealing Station
- No upper chain
- First floor flat
- Double glazing and gas central heating
- 10 minutes walk to Ealing Broadway Station
- EPC rating: C / council tax band: B

A beautiful apartment and just minutes walk to Ealing Broadway. The property is presented in an excellent contemporary condition throughout and features a comprehensive kitchen range, fully tiled luxury shower room, and fitted floor to ceiling wardrobes in the bedroom. The property is being sold with no upper chain.

1 1 1 C

Council Tax Band: B



Madeley Road

Approximate Gross Internal Area = 40.1 sq m / 431 sq ft



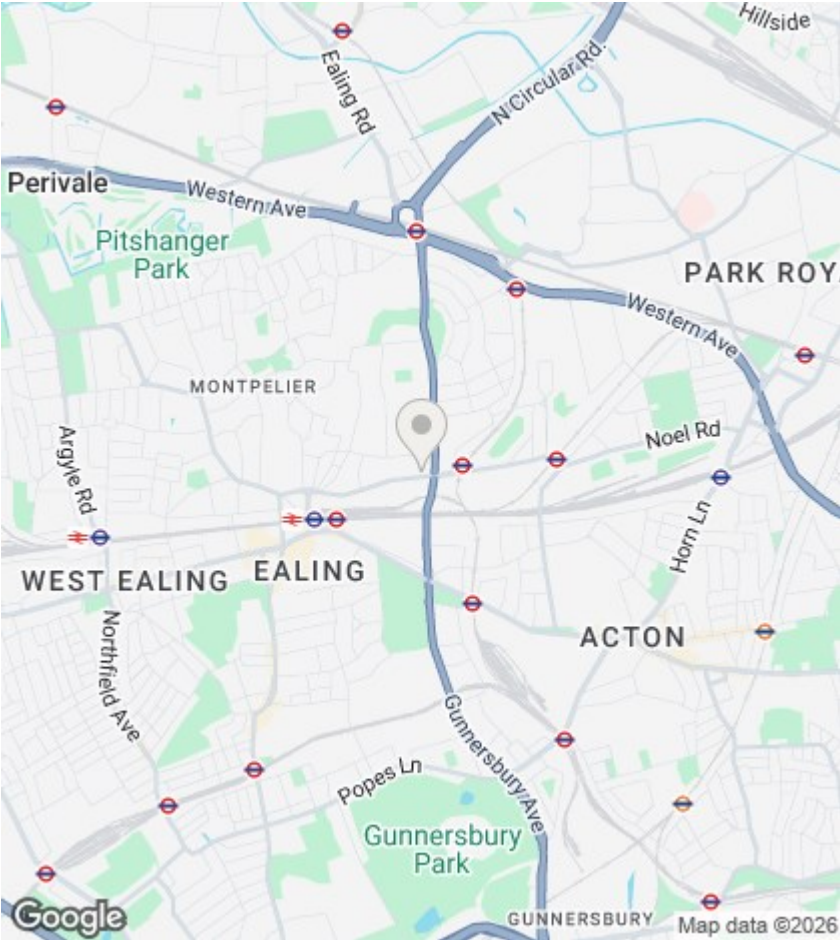
First Floor

Although every attempt has been made to ensure accuracy, all measurements are approximate.

The floorplan is for illustrative purposes only and not to scale.

© www.perspective.co.uk


Viewings



Viewings by arrangement only.
Call 020 8567 2242 to make an appointment.

EPC Rating:

C

| Energy Efficiency Rating | | |
|---|---|-----------|
| | Current | Potential |
| Very energy efficient - lower running costs | | |
| (92 plus) A | | |
| (81-91) B | | |
| (69-80) C | 78 | 78 |
| (55-68) D | | |
| (39-54) E | | |
| (21-38) F | | |
| (1-20) G | | |
| Not energy efficient - higher running costs | | |
| England & Wales | EU Directive 2002/91/EC  | |